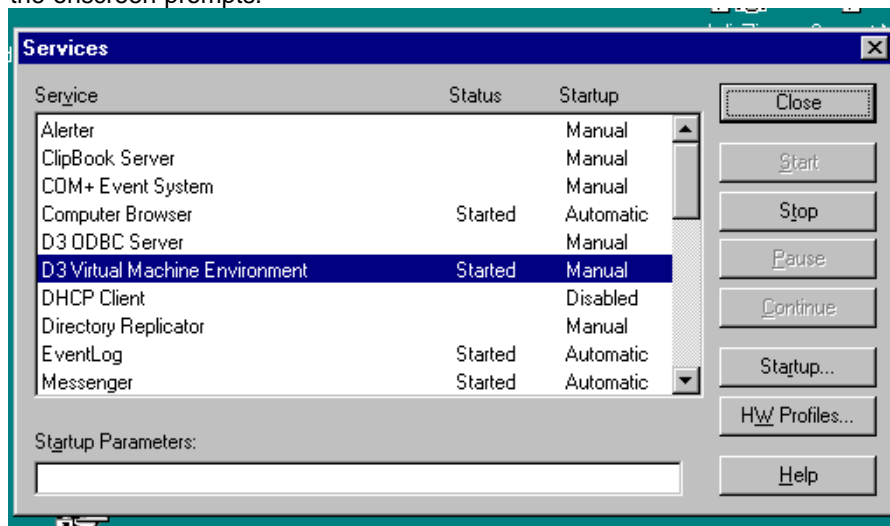


HOSPITAL MANAGEMENT LOAD PATCH INSTRUCTIONS

These notes supercede the previously released PATCH instructions. The old instructions should be discarded & these new ones retained for future reference.

Step One. Prepare.

- 1.1 Logoff all other users
- 1.2 Using the NT main console, logon as an administrator to NT.
- 1.3 Use Services to Stop & then Start the D3 Virtual Machine Environment. Services can be found in My Computer → Control Panel → Services. Highlight the entry **D3 Virtual Machine Environment** & click Stop. Follow the onscreen prompts until the D3 VME is stopped. Then with D3 Virtual Machine Highlighted, click Start and follow the onscreen prompts.



- 1.4 Close services, Control panel, My Computer etc and then log off from NT.

Step Two. Perform a full backup onto normal media

- 2.1 Log onto Hospital Management as usual and perform a full, verified backup using your normal backup methods. Log off when finished.

Step Three. Unpack the self-extracting archive.

- 3.1 The latest patch is held within a self-extracting archive called hmpatch.exe that you would have received by e-mail or downloaded from the Matash Australia Pty Ltd Web site. Save the program onto any suitable directory found on the your NT server. Do not save it to a local hard drive on your desktop system.
- 3.2 Using the NT main console, logon as an administrator to NT. Using Explorer, or Find, Locate the hmpatch.exe that you saved in step 3.1. Double click on the executable file you just saved. The archive will then prompt you to self extract to c:\hmupdate. Do not change the defaults, but allow the extraction to take place. Cancel out of the program when it is complete.
- 3.3 Log off from NT.

HOSPITAL MANAGEMENT LOAD PATCH INSTRUCTIONS

Step Four. Load the patch into Hospital Management.

- 4.1 From any screen that has access to the Hospital Management program, log on as usual and go to TCL by pressing F5 from the Hospital Management main menu. At the TCL prompt type in the following:

```
COPY DOS:C:/HMUPDATE HM_PATCH (O <Enter>
```

The system will respond with:

TO:

After which you type:

```
(MD <Enter>
```

The system should respond with "1 item copied"

- 4.2 Then at the TCL prompt, type in:

```
HM_PATCH <Enter>
```

The patch will then self install. During which time you will see a lot of information scrolling up the screen. The process is entirely self running & should require no operator intervention. When it finishes the TCL prompt will re-appear at the bottom left hand corner of the screen, after a message saying "End of Patch macro reached"

- 4.3 Press <Esc> to exit TCL & return to Hospital Management.

***** End of instructions *****